

# 1527 - 1527L

## API RP 1400 Male Adapter

### Tank Truck Adaptor Load/Unload valves



CE II 2G

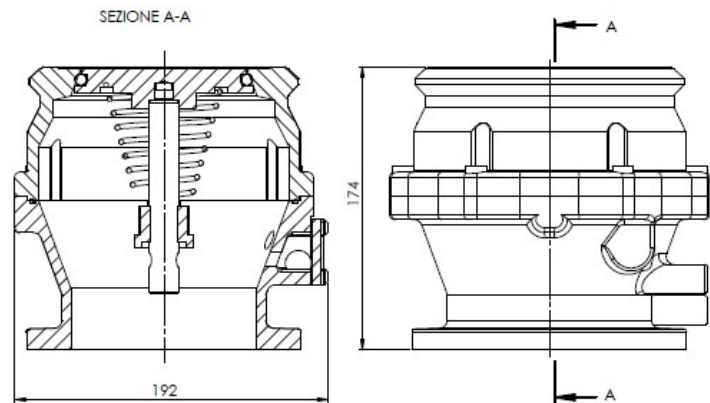
Ridart's 1527 Series API adaptors are a precisely engineered and built bottom loading and discharge adaptor that conforms to API RP 1004 and provides total interchangeability with all loading valves.

The male adapter API RP 1004 with sight glass is used to prevent any possible leaking during the process of transferring fluids during the loading/dischage of tank trucks.

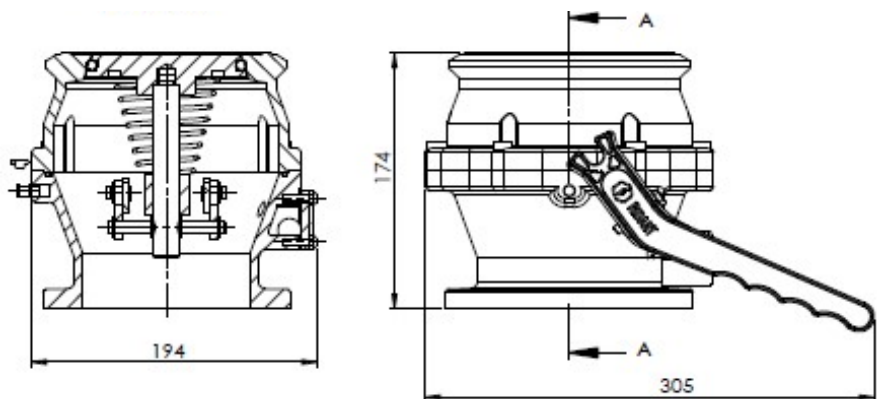
The adapter is available in two versions, one with lever (1527L) and one without a lever for manual opening (1527).



Mod. 1527



Mod. 1527L

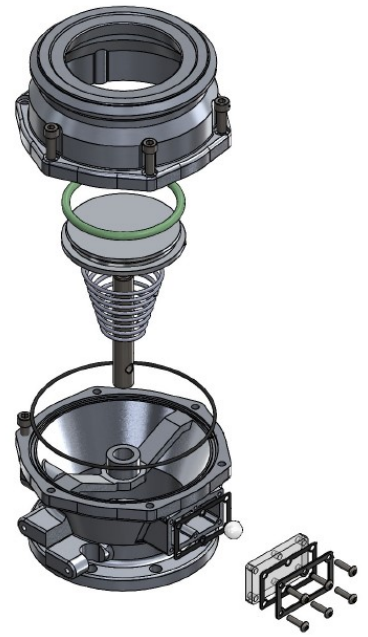


## Chemical Suitability

- Standard Model is for traditional fuel without additives or compatible chemical products

## Specification

<b>PRODUCT NUMBER</b>	<b>1527</b>	<b>1527 L</b>
<b>CODE</b>	<b>1527-00</b>	<b>1527L-00</b>
<b>BODY</b>	ALUMINIUM	ALUMINIUM
<b>LEVER</b>	-	ALUMINIUM
<b>INTERNAL COMPONENT</b>	STEEL	STEEL
<b>GASKET</b>	VITON®	VITON®
<b>GLASS</b>	LEXAN	LEXAN
<b>GLOBE</b>	NYLON	NYLON
<b>GLASS GASKET</b>	RUBBER	RUBBER
<b>FLANGE</b>	4" TTMA	4" TTMA
<b>WORKING TEMPERATURE</b>	- 20°C + 60°C	- 20°C + 60°C
<b>MAX WORKING PRESSURE</b>	5 bar	5 bar
<b>MAX FLOW RATE</b>	2500 L/MIN	2500 L/MIN



## Features

- API adaptor supplied with a mating 4" TTMA gasket.(Code 1527B-50)
- Ergonomically designed handle.
- Lightweight design – 3.8kg and 4,24 Kg with Lever.
- O-ring seals on shaft prevent leaks.
- High strength, transparent LEXAN™ material sight glass to visually check for retained product available.
- The coupler meets the API RP 1004 specification and can be used with all adapters compliant with this standard.
- API adaptors are available in various options, see also 1526 and 1521 Series.

## Installation

- The valve can be opened manually using the handle for discharge, or by an API coupler for bottom loading or unloading. (For safety, the handle is designed to not move when connected to coupler).
- For correct installation follow the Directives and product User Manual.
- For custom application or maintenance write to: [quality@ridart.it](mailto:quality@ridart.it)
- Declaration of Conformity and User Manual are available on: [www.ridart.it/support](http://www.ridart.it/support)

## Maintenance

- Periodically check the device is necessary to remove possible dirty.
- Always replace the product after fire or deflagration.
- In case of tampering warranty expires and safety protection is not guaranteed.