



# GRAVITY OVERFILL VALVE

Mod. 440

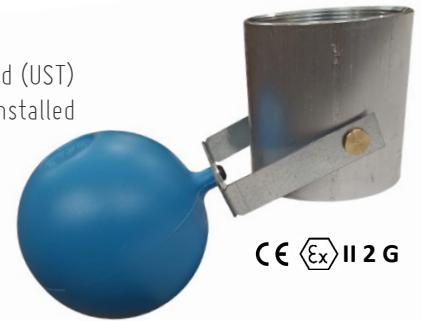


## APPLICATION

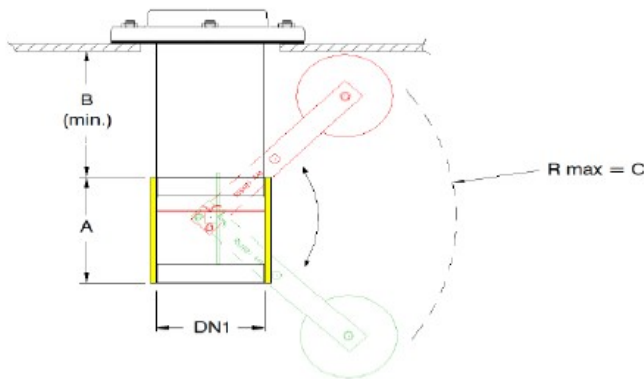
Overfill valves are designed to avoid overflow of liquid during filling operations of underground (UST) or aboveground (AST) storage fuel tank to prevent environmental hazards. The valve can be installed under the manhole lid of the tank by screwing it up on the riser flange.

## CHEMICAL SUITABILITY

- Aluminum standard model compatible with hydrocarbons.



CE Ex II 2 G



<b>BODY</b>	ALUMINIUM
<b>POPPET</b>	IRON
<b>THREAD</b>	BSPP
<b>TYPE OF FILLING</b>	GRAVITY
<b>MAXIMUN PRESSURE</b>	0,65 Bar
<b>FOAT</b>	POLYURETHANE (PU)
<b>WORKING TEMPERATURE</b>	- 20°C + 40°C

## FEAUTURES

CODE	DN1 - DN2	A	B	C	FILLING CAPACITY
092410	2" BSPP F	90 mm	73 mm	170 mm	550 l/min
092380	3" BSPP F	95 mm	130 mm	195 mm	600 l/min
092390	4" BSPP F	110 mm	130 mm	210 mm	800 l/min

- The loading process requires operator supervision.
- If the liquid does not escape from a filter before the valve, it is strongly recommended to do so in order to ensure that it works properly. Dirty particles can damage moving components and cause malfunctions.

## INSTALLATION

- Protection System is unidirectional, only for vertical installation.
- For correct installation follow the Directives and product User Manual.
- For custom application or maintenance write to : [quality@ridart.it](mailto:quality@ridart.it).
- Declaration of Conformity and User Manuals are available on : [www.ridart.it/support](http://www.ridart.it/support)

## MAINTENANCE

- Periodically check the device is necessary to remove possible dirty.
- Always replace the product after fire or deflagration.
- In case of tampering warranty expires and safety protection is not guaranteed.



Mod. 440  
CHIUSA

RIDART s.r.l. via Adua, 17 - 21045 Gazzada Schianno (VA) ITALY P.IVA/C.F. IT 01454770122  
www.ridart.it info@ridart.it +39 0332 463301

Product Certification, Declaration of Conformity, User Manual and Testing on: [www.ridart.it/support](http://www.ridart.it/support)  
The Data and Images are not binding. We reserve the right to make changes without notice. Pressure & Flow Tolerances ±20%.