

# 15

## Under Pump Check valves



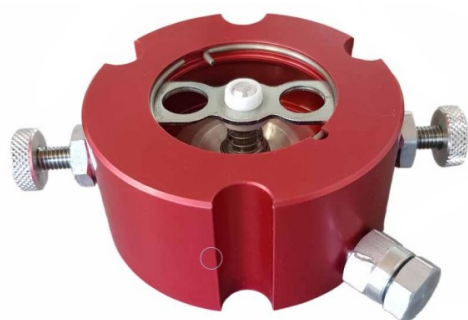
CE Ex II 2G

The check valve is designed to prevent the back flow of fluid on the suction system fuel line and permits its flow only in one direction. Top and lower isolation and testing of pipework are possible without disassembling of a suction line. The check valve can be installed between oval or triangular flanges.

Flexible hoses to fix the under pump check valve are available on request.

It's a device according with Directive 2014/34/EU and harmonized standard.

### Specification



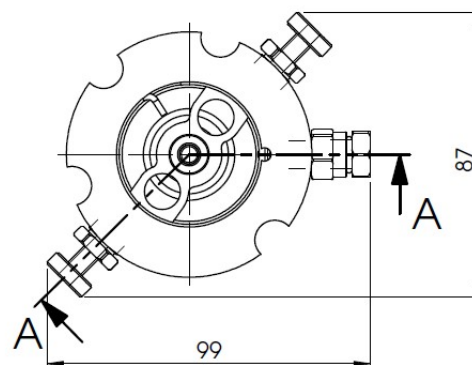
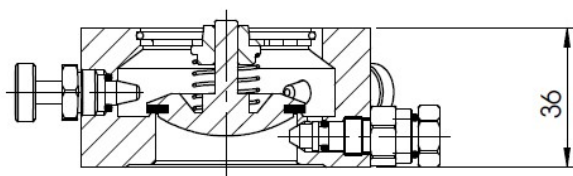
#### PARTS

#### MATERIAL

BODY	ANODIZED ALUMINIUM
MOLLA	STAINLESS STEEL
OR	VITON®
POPPET GUIDE	VITON®

#### FLOW RATE

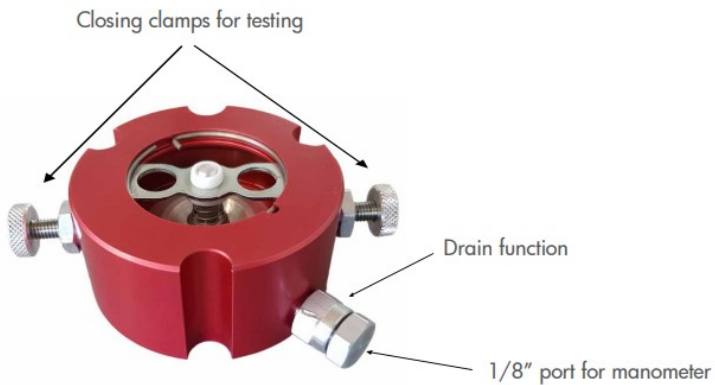
190 l/min (gravity up to di 3,5 mt)
540 l/min ( 2bar pressure)



### Chemical Suitability

- Standard Model is for traditional fuel without additives or compatible chemical products

PRODUCT	CODE
UNDER PUMP CHECK VALVE	15-40
TRIANGLE FLANGE 1" 1/2	010980
GASKET VITON <sup>®</sup> or NBR	010980 FKM / 010980 NBR
OVAL FLANGE 1" 1/2	090373
GASKET CORK or VITON <sup>®</sup>	090373SG / 090373CV



## Installation

- For correct installation follow the Directives and product User Manual.
- For custom application or maintenance write to: [quality@ridart.it](mailto:quality@ridart.it)
- Declaration of Conformity and User Manual are available on: [www.ridart.it/support](http://www.ridart.it/support)

## Maintenance

- Periodically check the device is necessary to remove possible dirty.
- Always replace the product after fire or deflagration.
- In case of tampering warranty expires and safety protection is not guaranteed.